


NHS
Oxford University Hospitals
NHS Foundation Trust

“The Frailty Response Unit” Implementation of Connected Mobile Point of Care Testing

Ian Smith
Emergency Department Sharing Event –
‘Working across services, sectors and specialities’
8th March 2019



Oxford University Hospitals **NHS**
NHS Foundation Trust

NHS
Oxford University Hospitals
NHS Foundation Trust

Clinical Biochemistry

Laboratories

- On three sites
- Main laboratory at the John Radcliffe Hospital – Core Automated Laboratory, multidisciplinary
- 9 million tests per year – Chemistry

Point of Care

- 250,000 blood gas
- 600,000 blood glucose

“The Frailty Response Unit” - Implementation of Connected Mobile Point of Care Testing Ian Smith

Oxford University Hospitals **NHS**
NHS Foundation Trust

Laboratory Role in Point of Care Testing

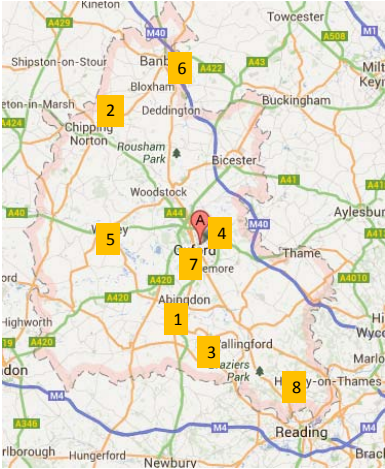
- Majority within Clinical Biochemistry
- Clinical Measurement (blood gas), Blood Conservation, Haematology, Microbiology (OUH - POCTAC)
- Managed Service with suppliers for blood glucose and i-Stat.
- Act as the the supplier for consumables (acceptance testing and verification).
- Coordination of training and connectivity.

“The Frailty Response Unit” - Implementation of Connected Mobile Point of Care Testing Ian Smith

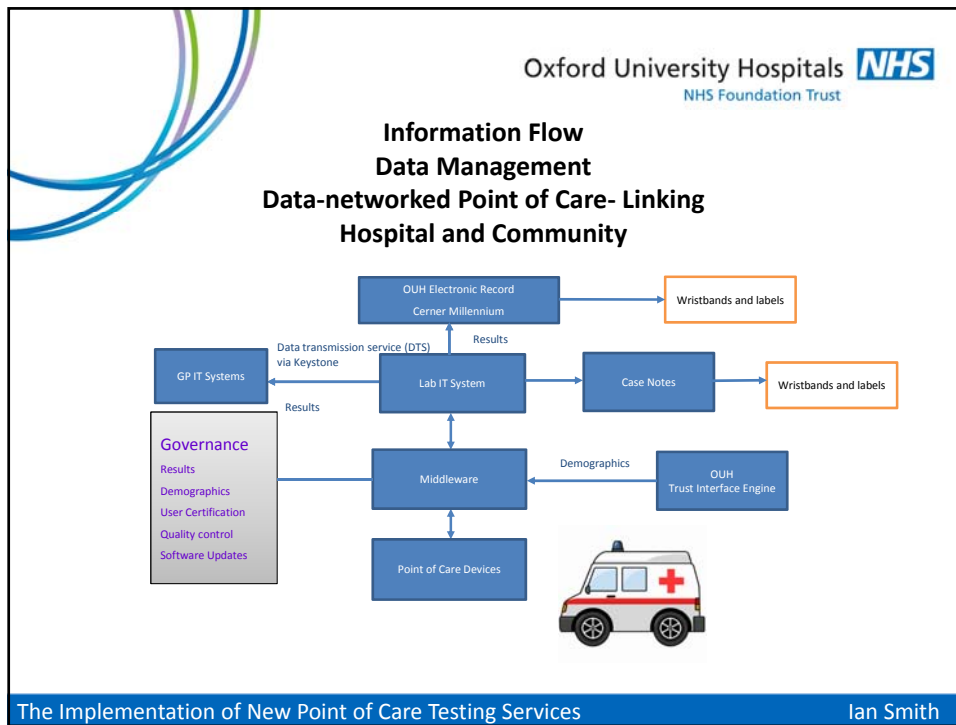
Oxford University Hospitals **NHS**
NHS Foundation Trust

Point of Care Testing in Oxfordshire

1. **Abingdon Community Hospital**
 - EMU (i-Stat, Afinion CRP, Urine Strip)
 - H@H (i-Stat)
 - GP Visiting (i-Stat)
2. **Chipping Norton Health Centre**
 - Afinion CRP
 - i-Stat
3. **Didcot Community Hospital**
 - i-Stat
4. **John Radcliffe**
 - AAU (i-Stat, Afinion CRP, Urine Strip)
 - H@H
5. **Witney Community Hospital**
 - EMU (i-Stat, Afinion CRP, Urine Strip)
 - Ward (i-Stat)
6. **Horton General – Banbury**
 - AAU (i-Stat, Afinion CRP, Urine Strip)
 - H@H
 - Private Hospital (i-Stat)
7. **East Oxford Health Centre**
 - GP Visiting (i-Stat)
8. **Henley Community Hospital**
 - RACU (i-Stat, Afinion CRP, Urine Strip)



“The Frailty Response Unit” - Implementation of Connected Mobile Point of Care Testing Ian Smith



Oxford University Hospitals **NHS**
NHS Foundation Trust

Mobile Services Frailty Response Unit

Point- of-Care Testing Panel:


Chem 8 – Hb (calculated), Na, K, Cl, Ur, Cr, iCa, TCO₂, Glu

CG4+ (VBG inc lactate)

NB – CRP POCT would be of obvious utility.

- Not currently available on the i-Stat
- We don't currently have a validated, mobile alternative.
- An additional piece of kit

"The Frailty Response Unit" - Implementation of Connected Mobile Point of Care Testing Ian Smith



Oxford University Hospitals **NHS**
NHS Foundation Trust


Mobile Services Frailty Response Unit

- Winter pressure funding for i-Stat and router.
- Equipment and assays validated (by OUH labs)
- Existing supply route for consumables – on the John Radcliffe site
- Existing contract with supplier
- Support with cartridges (and training) from supplier (Abbott).
- Middleware configured to communicate with i-Stats and send results to EPR.

- i-Stat known to POCT but not to SCAS

- New resource
- 2 Organizations (SCAS, OUH)
- Heavy IM&T involvement – New VPNs.
- Training – No experience of POCT
- Car not ready
- Required input from supplier on site.

“The Frailty Response Unit” - Implementation of Connected Mobile Point of Care Testing Ian Smith



Oxford University Hospitals **NHS**
NHS Foundation Trust

Outcome

Still Early Days

- 8 operators trained.
- Small numbers of tests performed to date
- Results transmitted to Cerner Millennium electronic patient record directly from car.
- The current connectivity solution isn't scalable as individual VPNs have been set up.

Single piece of equipment (i-Stat)
i-Stat already in use

Collaboration

- Emergency Department
- Ambulance Service
- IT
- Supplier

The Implementation of New Point of Care Testing Services Ian Smith